

Nuclear Gene Sequences from a Late Pleistocene Sloth Coprolite

Hendrik Poinar, Melanie Kuch,
Gregory McDonald, Paul Martin,
and Svante Pääbo

```

consensus: CGCAG--GCGTTTGAGACCC-CCACGCAGTTTT
1. 1:      .....
1. 2:      .....
1. 3:      .....
1. 4:      .....
1. 5:      .....
1. 6:      .....
1. 7:      .....
1. 8:      .....
1. 9:      .....
1.10:     .....
1.11:     .....ACC..ACGC.CC...G.....
1.12:     .....ACC..ACGC.CC...G.....
1.13:     .....ACC..ACGC.CC...G.....
1.14:     .....ACC..ACGC.CC...G.....

```

S1₁

S1₂

Figure S1. DNA Sequences of Clones from a Portion of the 28S rDNA Gene

S1₁ are clones that match closest to our three-toed sloth sequence, and S1₂ are clones that match to human DNA sequences. Identical bases to the consensus sequence at the top are represented by dots, ambiguous bases are represented by standard abbreviations, and dashes indicate deletions. The numbers at the right indicate the PCR number and clone number.

consensus: GACACCTCTGAATTGCCCTGCACGACTTCTACTGCAGCAAGCTGCTGGACCTGGCCTTCTCTGCTGGACGGCTCCAACAAGCTGTTCGGAGGCTG

1. 1:			
1. 2:			
1. 3:			
1. 4:			
1. 5:	S2 ₁		
1. 6:			
1. 7:			
1. 8:			
1. 9:			
1.10:			
1. 1:			
1. 2:			
1. 3:		S2 ₂	
1. 4:	...G.....			
1. 5:			
1. 6:			
1. 1:			
1. 2:			
1. 3:			
1. 4:			S2 ₃
1. 5:			
1. 6:		T.	
1. 7:		T.	
1. 1:			
1. 2:			
1. 3:			
1. 4:			
1. 5:			S2 ₄
1. 6:			
1. 7:			
1. 8:		N.	
1. 9:			
1.10:			
1. 1:			
1. 2:			
1. 3:			
1. 4:			
1. 5:			
1. 6:			
1. 7:			
1. 8:			
1. 9:			
1.10:			
2. 1:			
2. 2:			
2. 3:			
2. 4:			
2. 5:			
2. 6:			
2. 7:			
2. 8:			
2. 9:			
2.10:			

Figure S2. DNA Sequences of Clones from a Portion of the von Willebrand Factor Gene, *vWF*

S2₁-S2₅ are clones derived from the five different length PCRs. Identical bases to the consensus sequence at the top are represented by dots, ambiguous bases are represented by standard abbreviations, and dashes indicate deletions. The numbers at the right indicate the PCR number and clone number.

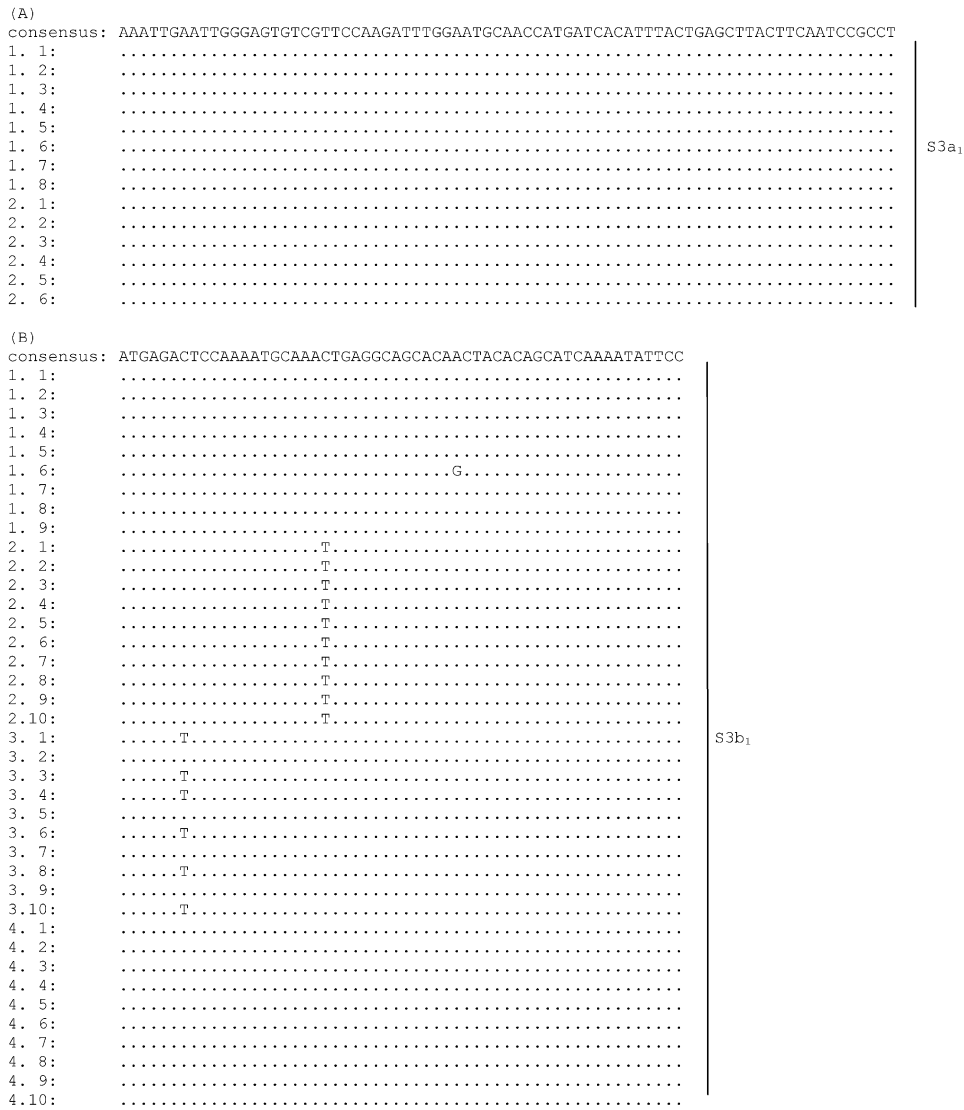


Figure S3. DNA Sequences of Clones Encoding *CREM* and *PCLB4*

(A) DNA sequences of clones from a portion of the exon encoding the 3' UTR of the camp-responsive element modulator gene (*CREM*).

(B) DNA sequences of clones from a portion of the exon encoding the 3' UTR of the phospholipase C, β 4 gene (*PCLB4*).

Identical bases to the consensus sequence at the top are represented by dots, ambiguous bases are represented by standard abbreviations, and dashes indicate deletions. The numbers at the right indicate the PCR number and clone number.