

Alces alces

Invent.Nr.: 77296

adult

Scapula

All images are of left sided elements (except axial skeleton).

Thanks to the Humboldt-Universität zu Berlin, Museum für Naturkunde, Säugetier-Abteilung, Berlin
for the loan of the skeleton.



Alces alces

Invent.Nr.: 77296

adult

Humerus

All images are of left sided elements (except axial skeleton).

Thanks to the Humboldt-Universität zu Berlin, Museum für Naturkunde, Säugetier-Abteilung, Berlin
for the loan of the skeleton.



Alces alces

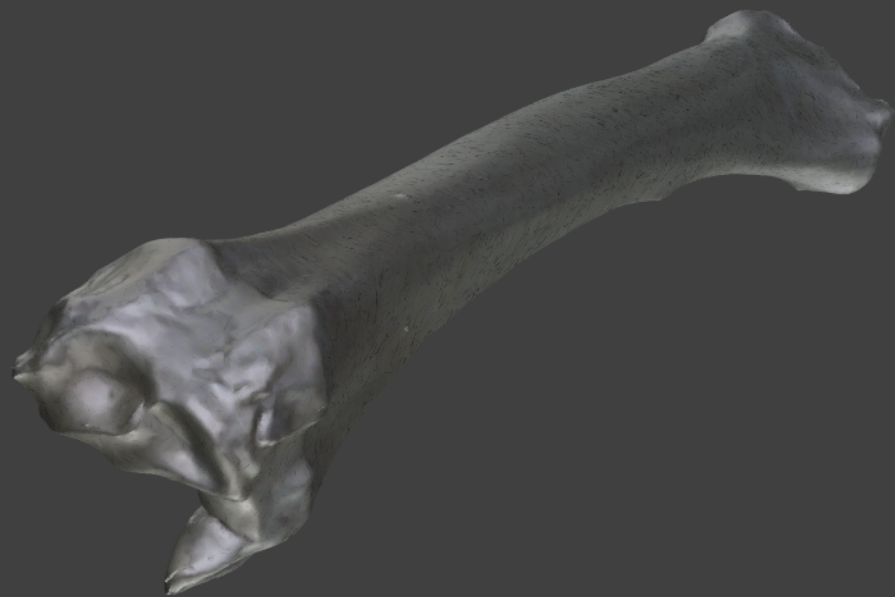
Invent.Nr.: 77296

adult

Radius

All images are of left sided elements (except axial skeleton).

Thanks to the Humboldt-Universität zu Berlin, Museum für Naturkunde, Säugetier-Abteilung, Berlin
for the loan of the skeleton.



Alces alces

Invent.Nr.: 77296

adult

Ulna

All images are of left sided elements (except axial skeleton).

Thanks to the Humboldt-Universität zu Berlin, Museum für Naturkunde, Säugetier-Abteilung, Berlin
for the loan of the skeleton.



Alces alces

Invent.Nr.: 77296

adult

Metacarpal

All images are of left sided elements (except axial skeleton).

Thanks to the Humboldt-Universität zu Berlin, Museum für Naturkunde, Säugetier-Abteilung, Berlin
for the loan of the skeleton.



Alces alces

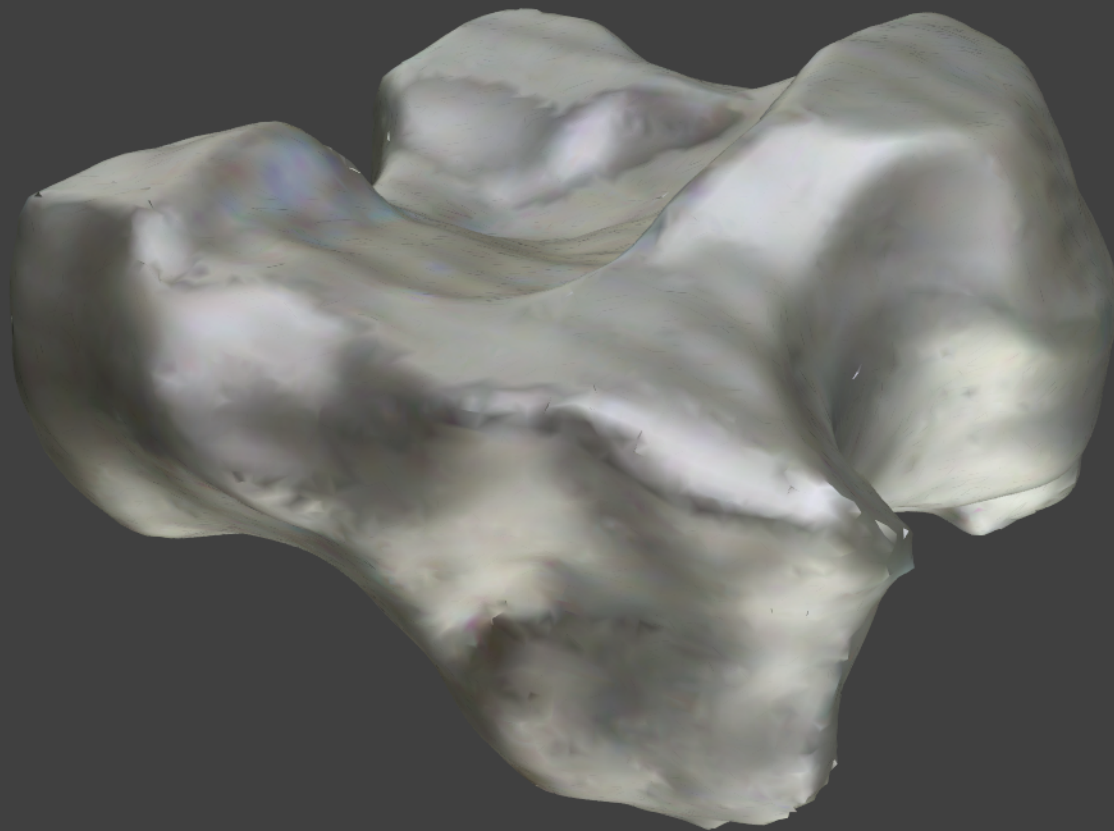
Invent.Nr.: 77296

adult

Lunate

All images are of left sided elements (except axial skeleton).

Thanks to the Humboldt-Universität zu Berlin, Museum für Naturkunde, Säugetier-Abteilung, Berlin
for the loan of the skeleton.



Alces alces

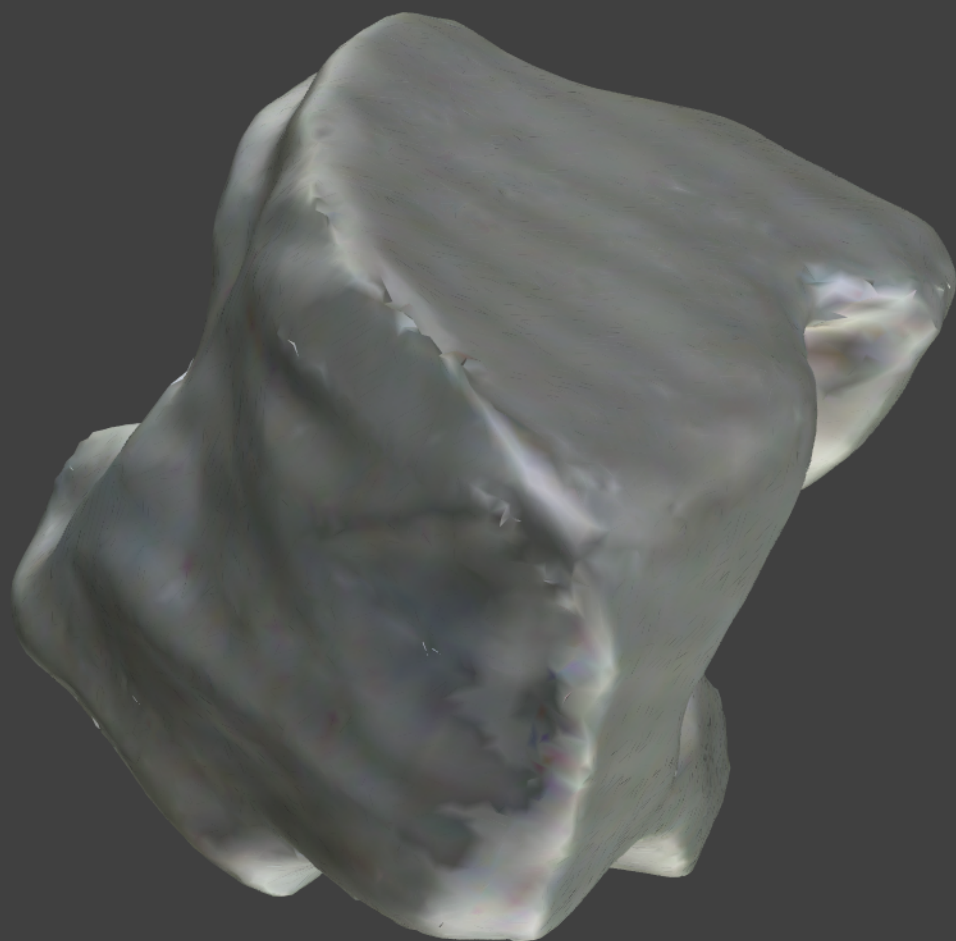
Invent.Nr.: 77296

adult

Hamate

All images are of left sided elements (except axial skeleton).

Thanks to the Humboldt-Universität zu Berlin, Museum für Naturkunde, Säugetier-Abteilung, Berlin
for the loan of the skeleton.



Alces alces

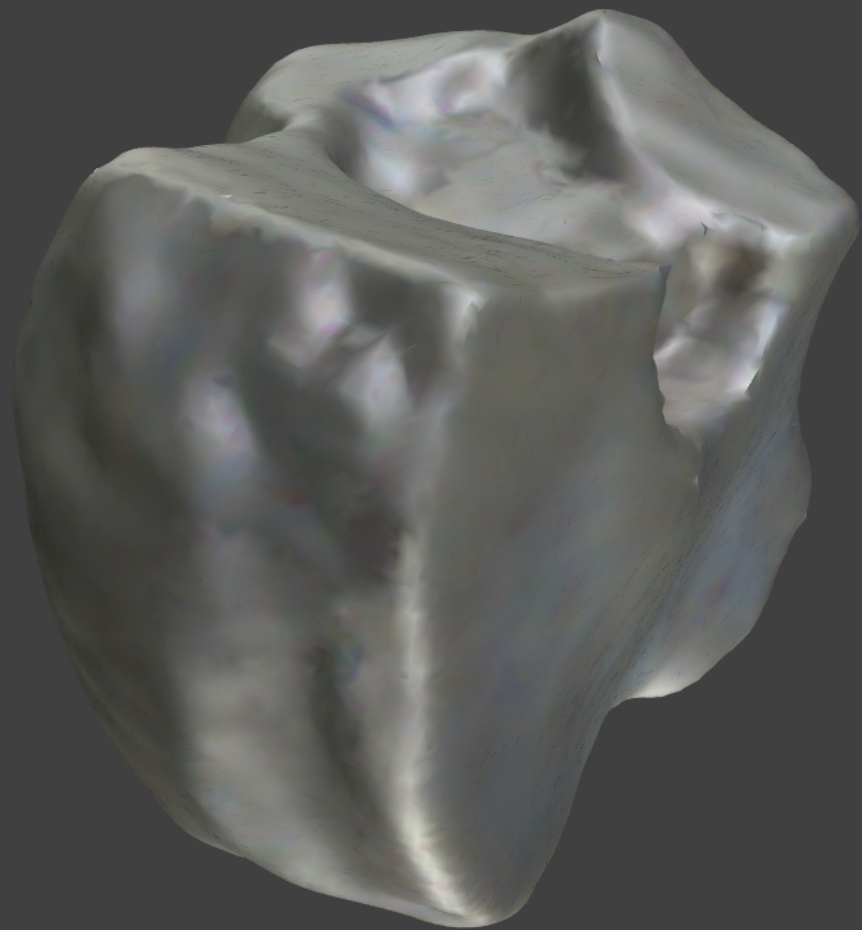
Invent.Nr.: 77296

adult

Magnum

All images are of left sided elements (except axial skeleton).

Thanks to the Humboldt-Universität zu Berlin, Museum für Naturkunde, Säugetier-Abteilung, Berlin
for the loan of the skeleton.



Alces alces

Invent.Nr.: 77296

adult

Scaphoid

All images are of left sided elements (except axial skeleton).

Thanks to the Humboldt-Universität zu Berlin, Museum für Naturkunde, Säugetier-Abteilung, Berlin
for the loan of the skeleton.

