

Castor fiber

Invent.Nr.: 75/157

male, adult

Femur

All images are of left sided elements (except axial skeleton).

Thanks to the MLU Halle-Wittenberg, Institut für Zoologie, Zoologische Sammlungen, for the loan of the skeleton.



Castor fiber

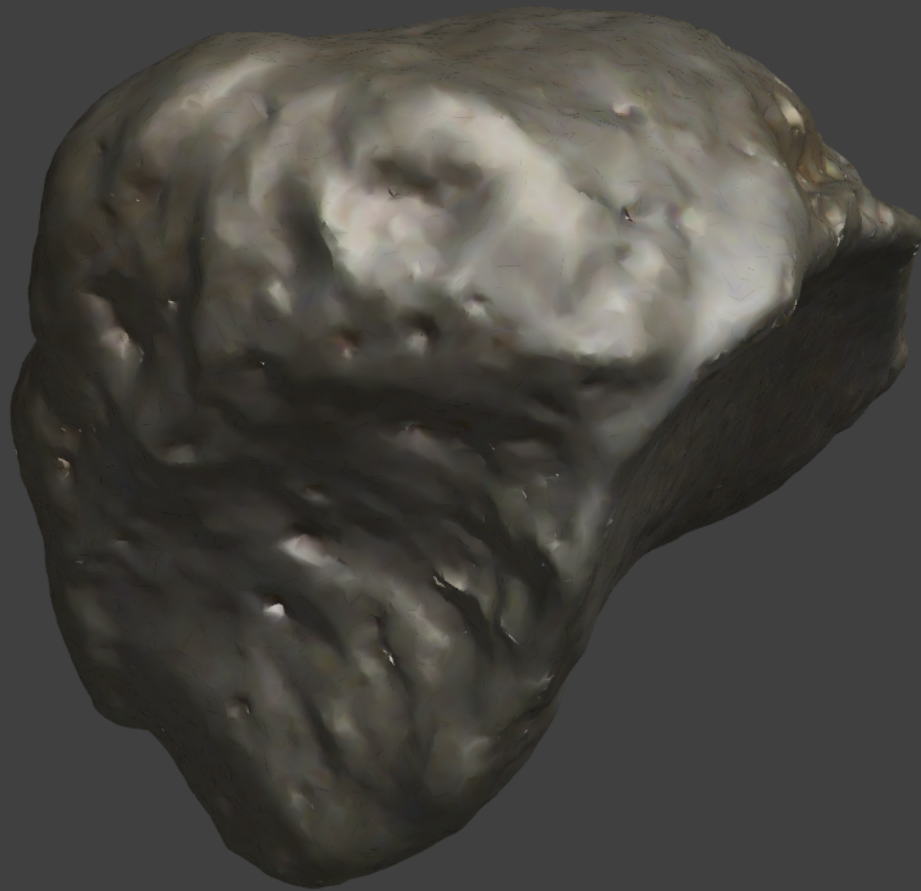
Invent.Nr.: 75/157

male, adult

Patella

All images are of left sided elements (except axial skeleton).

Thanks to the MLU Halle-Wittenberg, Institut für Zoologie, Zoologische Sammlungen, for the loan of the skeleton.



Castor fiber

Invent.Nr.: 75/157

male, adult

Tibia

All images are of left sided elements (except axial skeleton).

Thanks to the MLU Halle-Wittenberg, Institut für Zoologie, Zoologische Sammlungen, for the loan of the skeleton.



Castor fiber

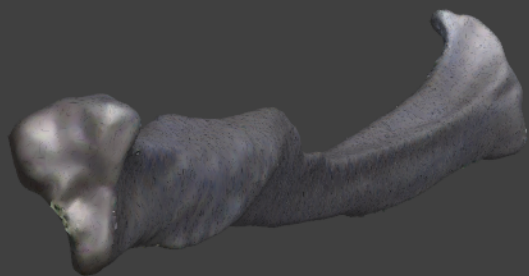
Invent.Nr.: 75/157

male, adult

Fibula

All images are of left sided elements (except axial skeleton).

Thanks to the MLU Halle-Wittenberg, Institut für Zoologie, Zoologische Sammlungen, for the loan of the skeleton.



Castor fiber

Invent.Nr.: 75/157

male, adult

Astragalus

All images are of left sided elements (except axial skeleton).

Thanks to the MLU Halle-Wittenberg, Institut für Zoologie, Zoologische Sammlungen, for the loan of the skeleton.



Castor fiber

Invent.Nr.: 75/157

male, adult

Calcaneus

All images are of left sided elements (except axial skeleton).

Thanks to the MLU Halle-Wittenberg, Institut für Zoologie, Zoologische Sammlungen, for the loan of the skeleton.

