

Cervus elaphus

Invent.Nr.: 05/01

male, adult

Cranium

All images are of left sided elements (except axial skeleton).

Specimen from MPI-EVA comparative collections, Leipzig



Cervus elaphus

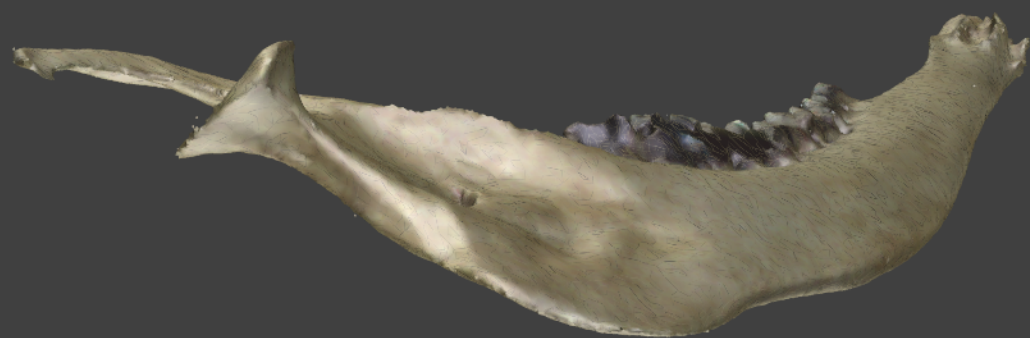
Invent.Nr.: 05/01

male, adult

Mandible

All images are of left sided elements (except axial skeleton).

Specimen from MPI-EVA comparative collections, Leipzig



Cervus elaphus

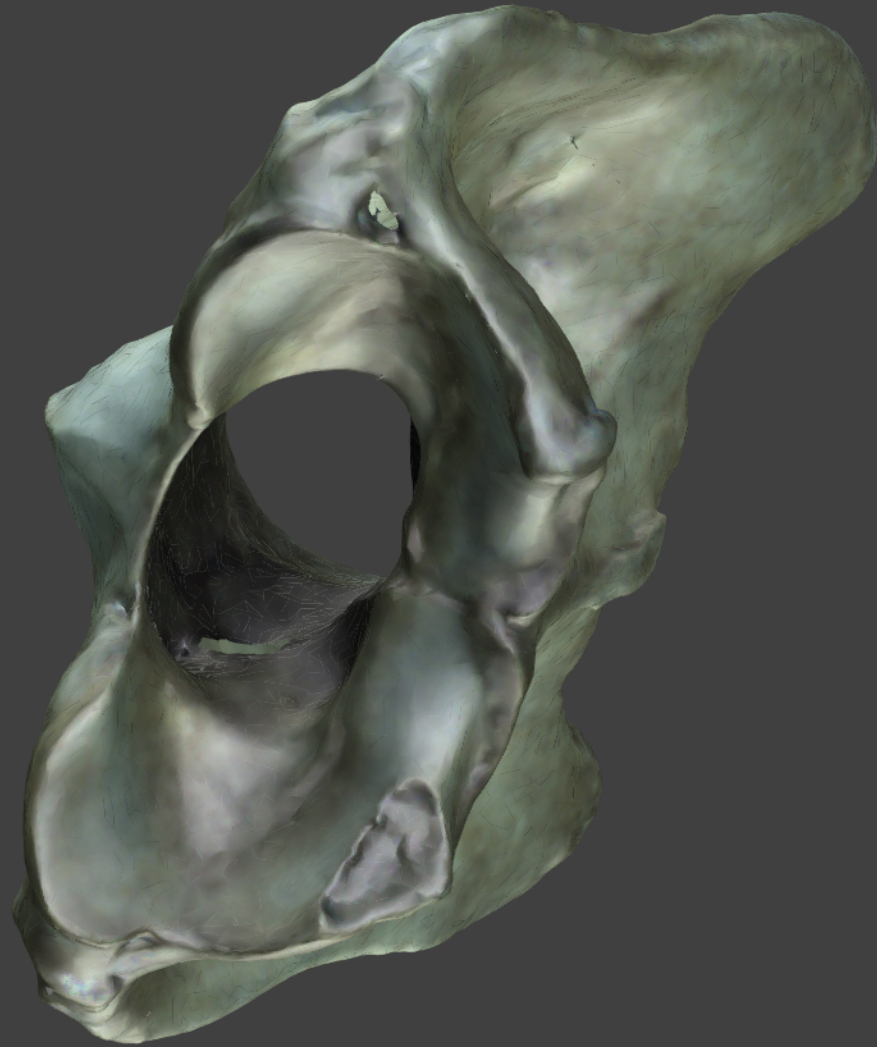
Invent.Nr.: 05/01

male, adult

Atlas

All images are of left sided elements (except axial skeleton).

Specimen from MPI-EVA comparative collections, Leipzig



Cervus elaphus

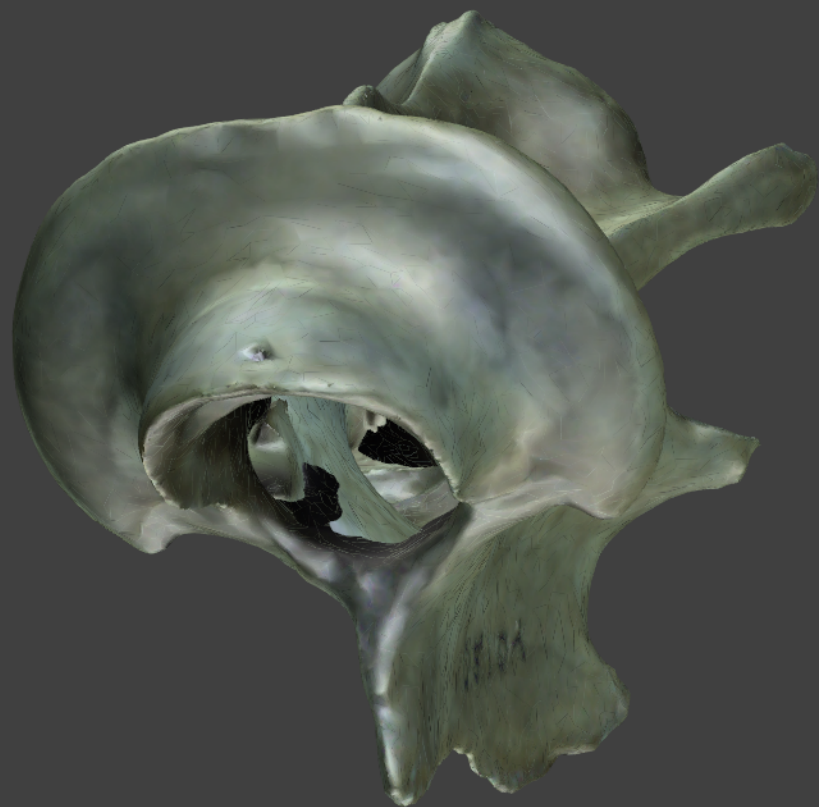
Invent.Nr.: 05/01

male, adult

Axis

All images are of left sided elements (except axial skeleton).

Specimen from MPI-EVA comparative collections, Leipzig



Cervus elaphus

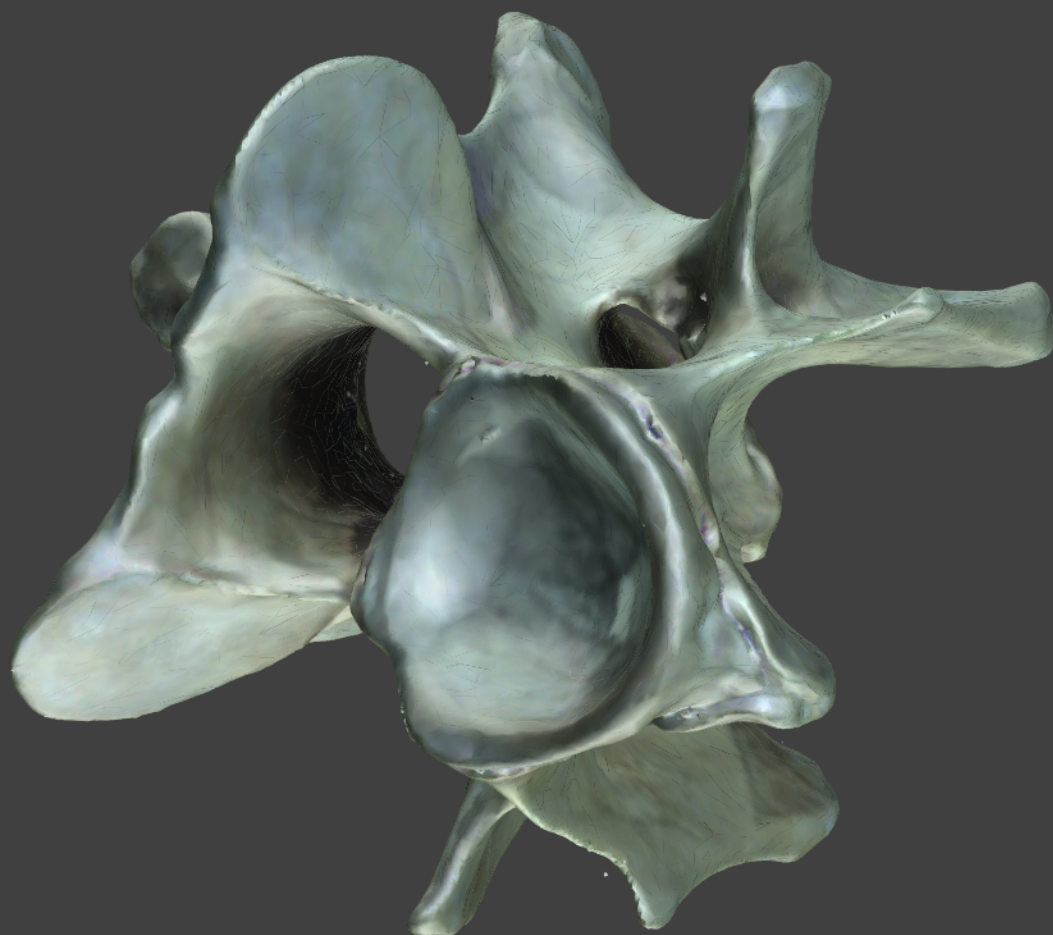
Invent.Nr.: 05/01

male, adult

Cervical vertebra

All images are of left sided elements (except axial skeleton).

Specimen from MPI-EVA comparative collections, Leipzig



Cervus elaphus

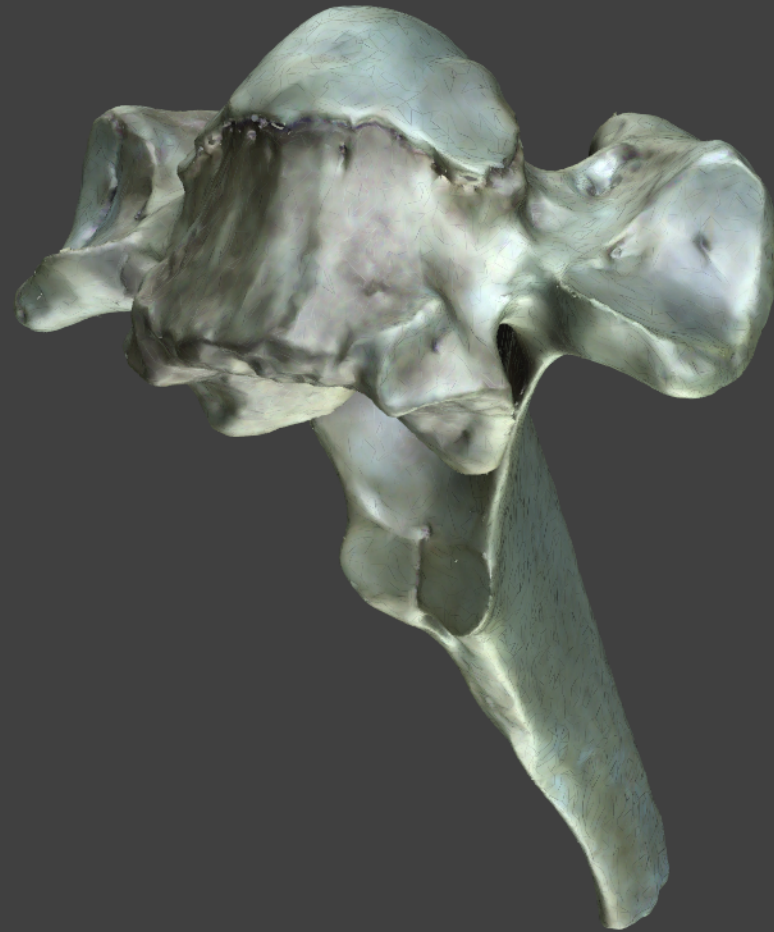
Invent.Nr.: 05/01

male, adult

Thoracic vertebra

All images are of left sided elements (except axial skeleton).

Specimen from MPI-EVA comparative collections, Leipzig



Cervus elaphus

Invent.Nr.: 05/01

male, adult

Lumbar vertebra

All images are of left sided elements (except axial skeleton).

Specimen from MPI-EVA comparative collections, Leipzig



Cervus elaphus

Invent.Nr.: 05/01

male, adult

Rib

All images are of left sided elements (except axial skeleton).

Specimen from MPI-EVA comparative collections, Leipzig



Cervus elaphus

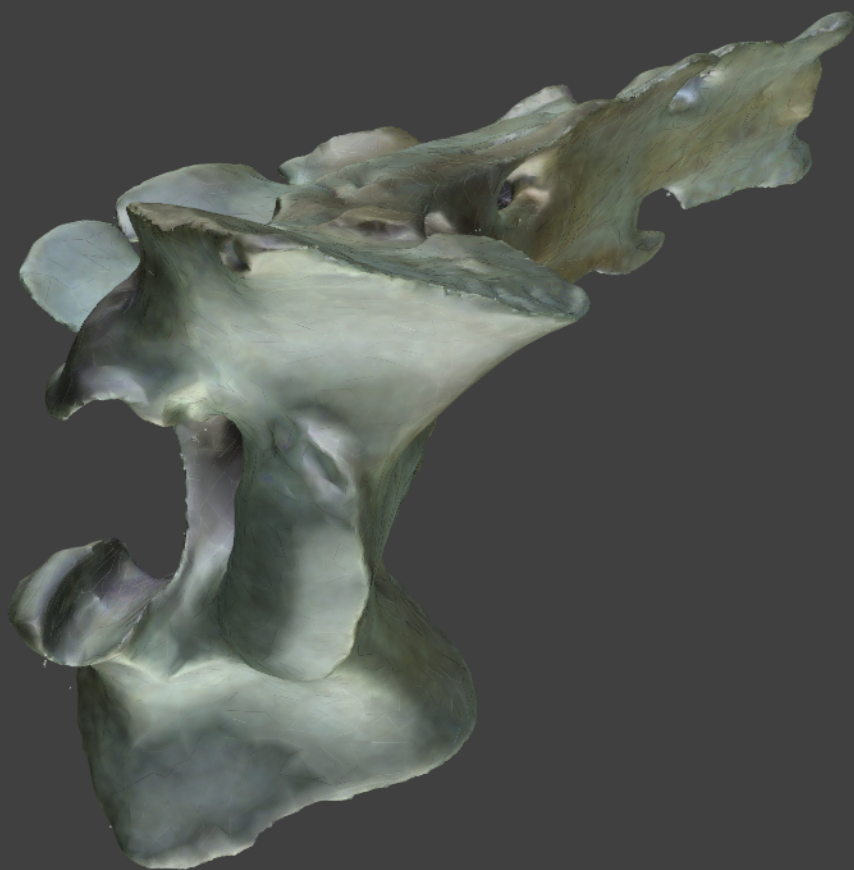
Invent.Nr.: 05/01

male, adult

Sacrum

All images are of left sided elements (except axial skeleton).

Specimen from MPI-EVA comparative collections, Leipzig



Cervus elaphus

Invent.Nr.: 05/01

male, adult

Pelvis

All images are of left sided elements (except axial skeleton).

Specimen from MPI-EVA comparative collections, Leipzig

