

Equus caballus

Mongolian brown, Invent.Nr.: Emgl 3

female, adult

Femur

All images are of left sided elements.

Thanks to the Museum für Haustierkunde „Julius Kühn“ Halle/Saale for the loan of the skeleton.



Equus caballus

Mongolian brown, Invent.Nr.: Emgl 3

female, adult

Patella

All images are of left sided elements.

Thanks to the Museum für Haustierkunde „Julius Kühn“ Halle/Saale for the loan of the skeleton.



Equus caballus

Mongolian brown, Invent.Nr.: Emgl 3

female, adult

Tibia

All images are of left sided elements.

Thanks to the Museum für Haustierkunde „Julius Kühn“ Halle/Saale for the loan of the skeleton.



Equus caballus

Mongolian brown, Invent.Nr.: Emgl 3

female, adult

Metatarsal III

(with II articulated)

All images are of left sided elements.

Thanks to the Museum für Haustierkunde „Julius Kühn“ Halle/Saale for the loan of the skeleton.



Equus caballus

Mongolian brown, Invent.Nr.: Emgl 3

female, adult

Metatarsal IV

All images are of left sided elements.

Thanks to the Museum für Haustierkunde „Julius Kühn“ Halle/Saale for the loan of the skeleton.



Equus caballus

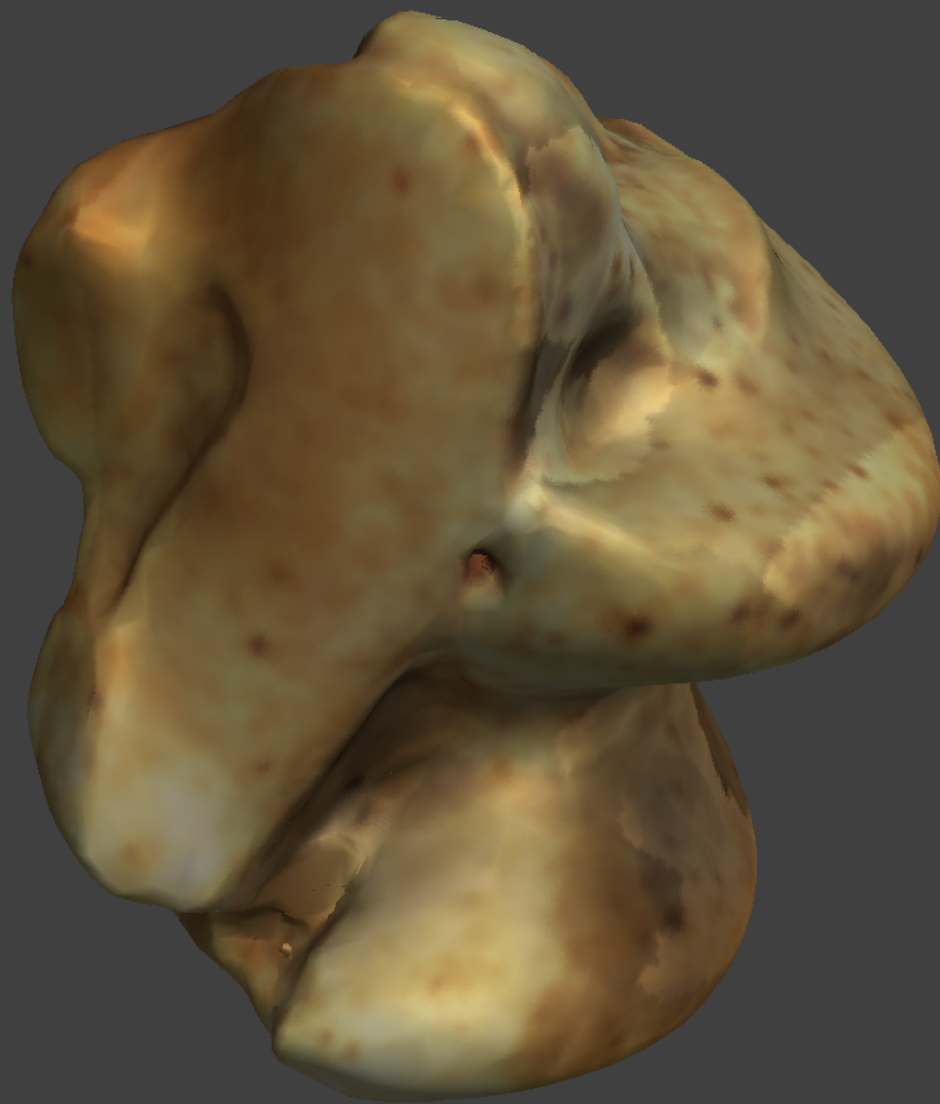
Mongolian brown, Invent.Nr.: Emgl 3

female, adult

Astragalus

All images are of left sided elements.

Thanks to the Museum für Haustierkunde „Julius Kühn“ Halle/Saale for the loan of the skeleton.



Equus caballus

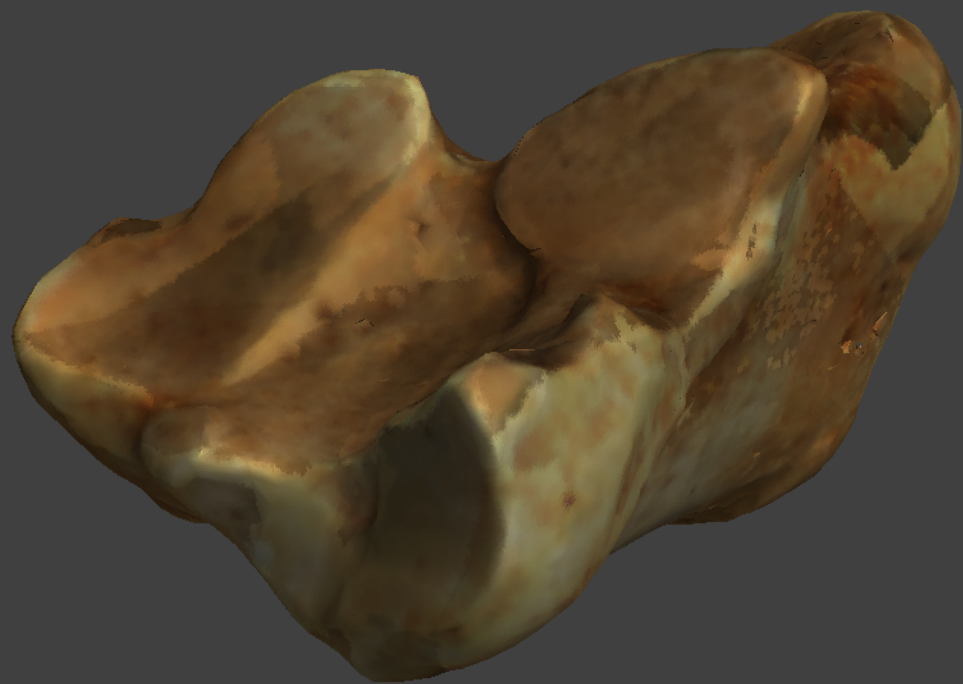
Mongolian brown, Invent.Nr.: Emgl 3

female, adult

Calcaneus

All images are of left sided elements.

Thanks to the Museum für Haustierkunde „Julius Kühn“ Halle/Saale for the loan of the skeleton.



Equus caballus

Mongolian brown, Invent.Nr.: Emgl 3

female, adult

Cuboid

All images are of left sided elements.

Thanks to the Museum für Haustierkunde „Julius Kühn“ Halle/Saale for the loan of the skeleton.



Equus caballus

Mongolian brown, Invent.Nr.: Emgl 3

female, adult

Grand Cuneiform

All images are of left sided elements.

Thanks to the Museum für Haustierkunde „Julius Kühn“ Halle/Saale for the loan of the skeleton.



Equus caballus

Mongolian brown, Invent.Nr.: Emgl 3

female, adult

Lateral Cuneiform

All images are of left sided elements.

Thanks to the Museum für Haustierkunde „Julius Kühn“ Halle/Saale for the loan of the skeleton.



Equus caballus

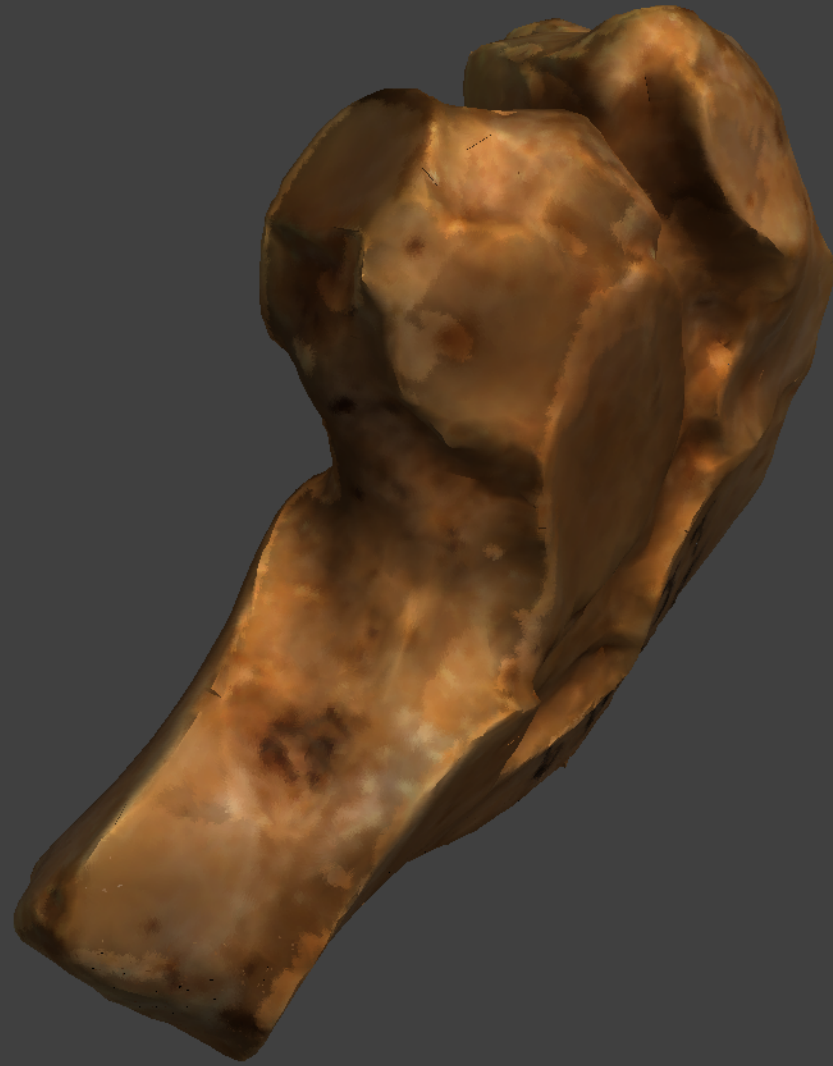
Mongolian brown, Invent.Nr.: Emgl 3

female, adult

Navicular

All images are of left sided elements.

Thanks to the Museum für Haustierkunde „Julius Kühn“ Halle/Saale for the loan of the skeleton.



Equus caballus

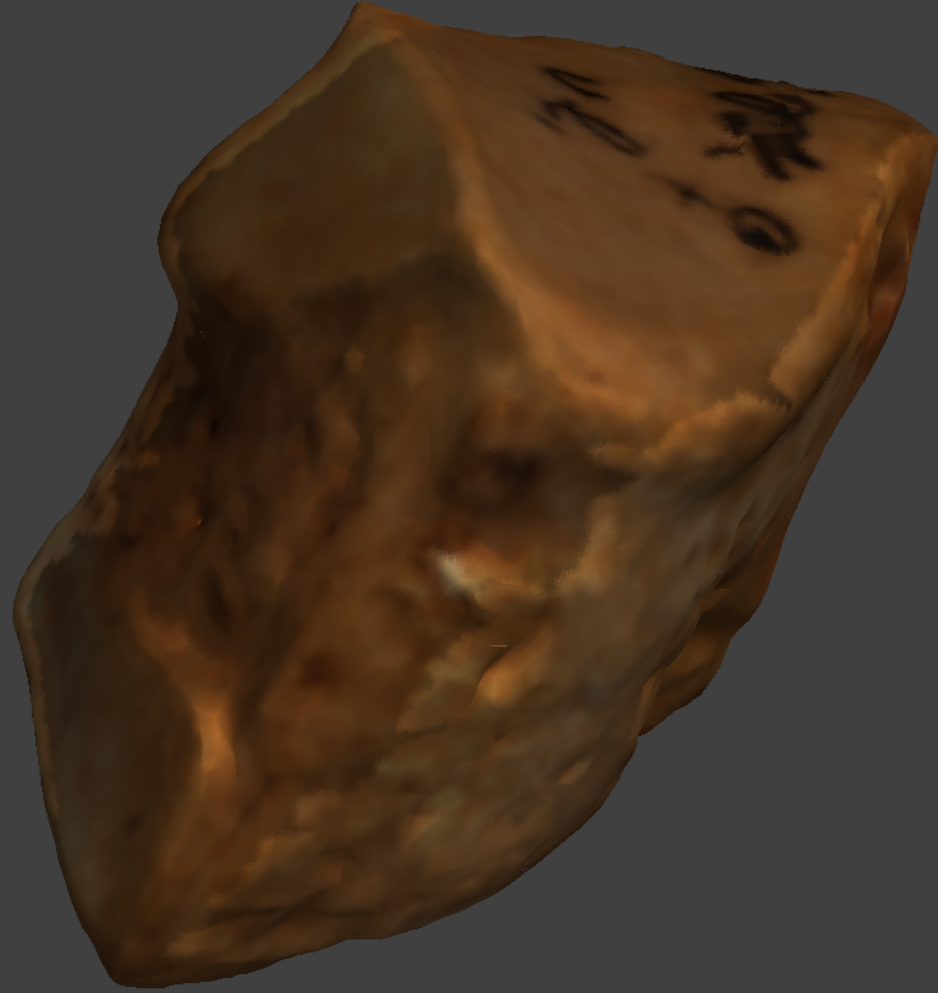
Mongolian brown, Invent.Nr.: Emgl 3

female, adult

Triquetral Pyramidal

All images are of left sided elements.

Thanks to the Museum für Haustierkunde „Julius Kühn“ Halle/Saale for the loan of the skeleton.



Equus caballus

Mongolian brown, Invent.Nr.: Emgl 3

female, adult

Sesamoid

(distal, hindlimb)

All images are of left sided elements.

Thanks to the Museum für Haustierkunde „Julius Kühn“ Halle/Saale for the loan of the skeleton.



Equus caballus

Mongolian brown, Invent.Nr.: Emgl 3

female, adult

Phalanx I

All images are of left sided elements.

Thanks to the Museum für Haustierkunde „Julius Kühn“ Halle/Saale for the loan of the skeleton.



Equus caballus

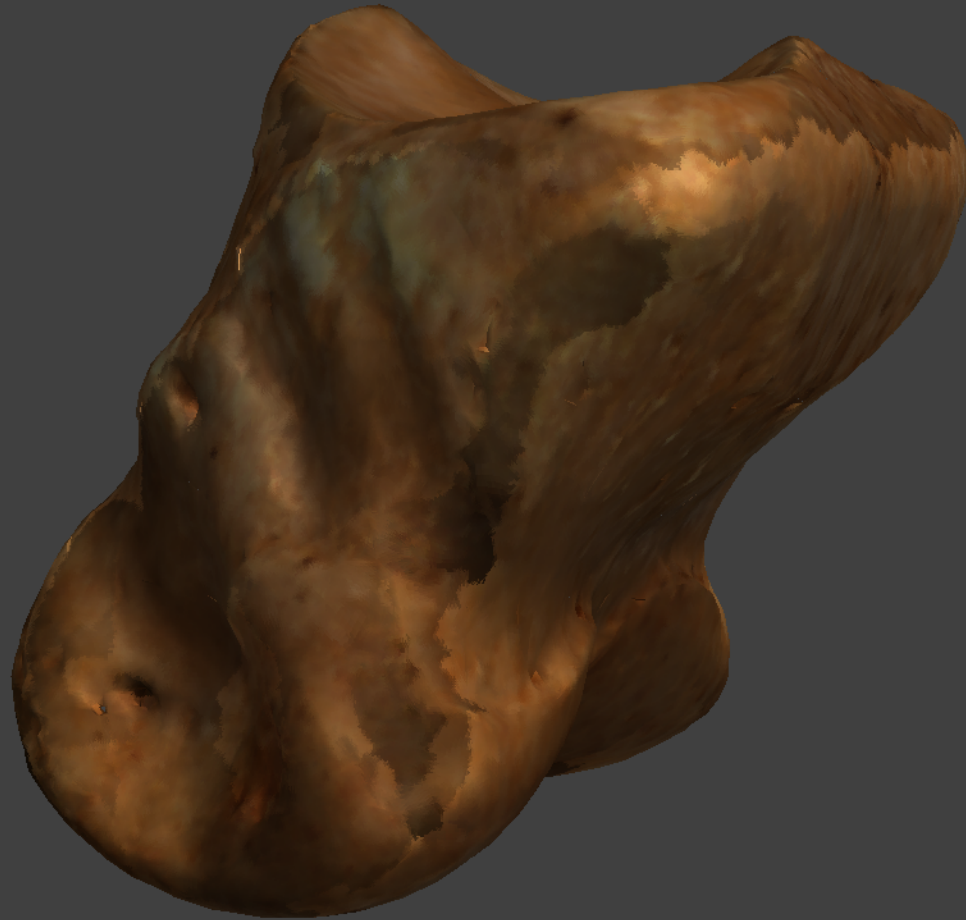
Mongolian brown, Invent.Nr.: Emgl 3

female, adult

Phalanx II

All images are of left sided elements.

Thanks to the Museum für Haustierkunde „Julius Kühn“ Halle/Saale for the loan of the skeleton.



Equus caballus

Mongolian brown, Invent.Nr.: Emgl 3

female, adult

Phalanx III

All images are of left sided elements.

Thanks to the Museum für Haustierkunde „Julius Kühn“ Halle/Saale for the loan of the skeleton.

